

Why choose?

When you can use NPWT and irrigation together *simultaneously* using the Cardinal Health™ NPWT systems



GET MORE

For some wounds, you may want to provide more than just NPWT. Cardinal Health offers the only NPWT system that gives you the option of delivering a topical solution into the wound bed **at the same time** NPWT is applied.

Features:

Controlled process

Irrigant flows continuously while NPWT is also being delivered — a controlled process that thoroughly bathes the wound and also removes the irrigant and associated debris/bioburden.¹

Right amount

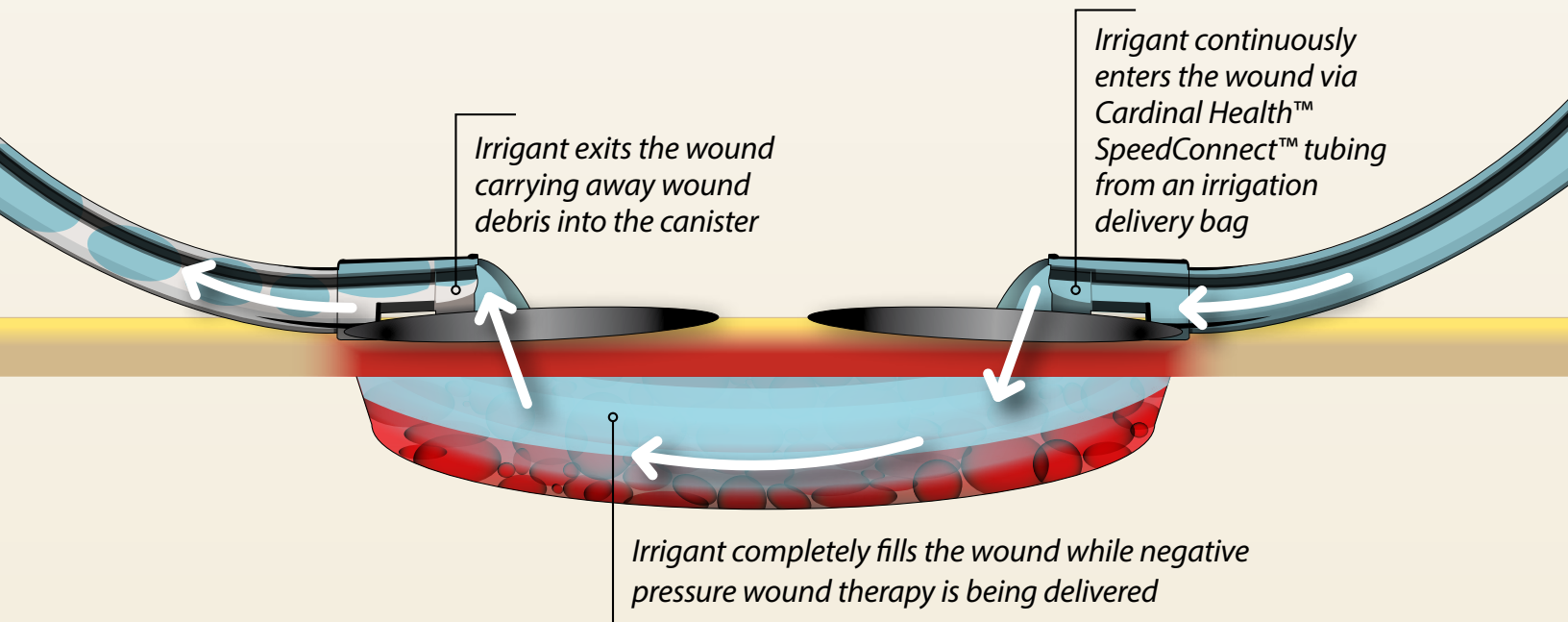
Delivers the right amount of irrigant to fill the wound completely.²

You set drip rate

Set the drip rate of the wound cleanser or antiseptic of your choice.

You're in control

You can continue to use the same Cardinal Health™ NPWT device **with or without *Simultaneous Irrigation™ Technology***.



Comparing *Simultaneous Irrigation™* Technology to Intermittent Instillation³

Feature	Cardinal Health™ Simultaneous Irrigation	Intermittent Instillation
Irrigant constantly streams across entire wound bed, tunnels, and undermined areas ¹	Yes	No
Irrigation solution delivered through a separate port rather than through the potentially contaminated suction port	Yes	No
NPWT is suspended while irrigant is introduced into the wound and held in place	No	Yes
Requires determination of irrigation fill volume to prevent overflowing or underfilling	No	Yes
Requires unique dressing set	No	Yes
Requires special cassette to hold and deliver irrigation solution	No	Yes

Utilizing *Simultaneous Irrigation™* Technology with Cardinal Health™ NPWT Devices

Ensure the irrigation fluid supply remains off until therapy is started and target pressure achieved.⁴

1. Obtain physician order for irrigation solution type and delivery rate.
2. Connect Cardinal Health™ Irrigation Tubing Set with SpeedConnect™ to irrigation solution container or use the Cardinal Health™ Irrigation Delivery Set, which incorporates an irrigation bag with the Cardinal Health™ SpeedConnect™ tubing set together. Close irrigation clamp completely.
3. Hang irrigation bag on IV pole higher than the wound.
4. Apply the Cardinal Health™ NPWT dressing as usual (Figure 1).
5. Select desired location for the Cardinal Health™ Irrigation SpeedConnect™ port. Cut a 1cm diameter hole in the top of the drape where the Cardinal Health™ Irrigation SpeedConnect™ is to be placed (Figure 2).

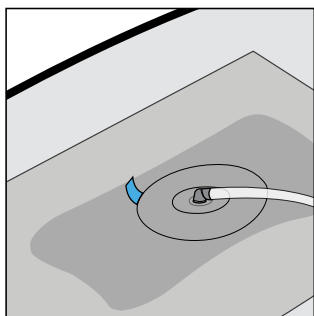


Figure 1

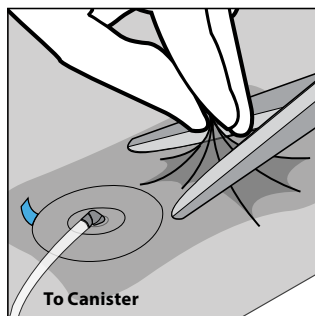


Figure 2

6. Peel the backing from the Cardinal Health™ Irrigation SpeedConnect™ port and place over hole made in Step 5 (Figures 3 – 4). Using the tips of the fingers, gently press around the Cardinal Health™ Irrigation SpeedConnect™ port to ensure a good seal to the dressing (Figure 5).

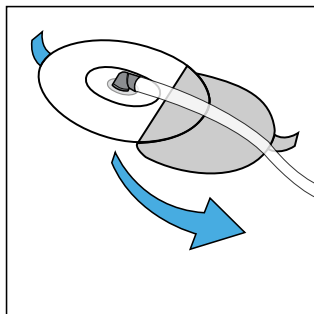


Figure 3

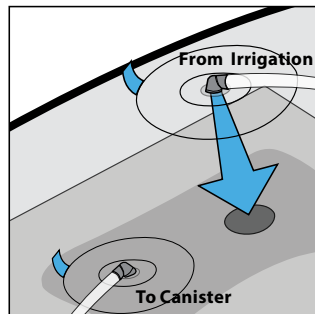


Figure 4

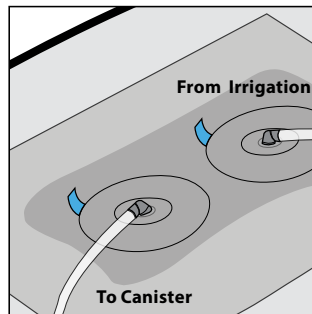


Figure 5

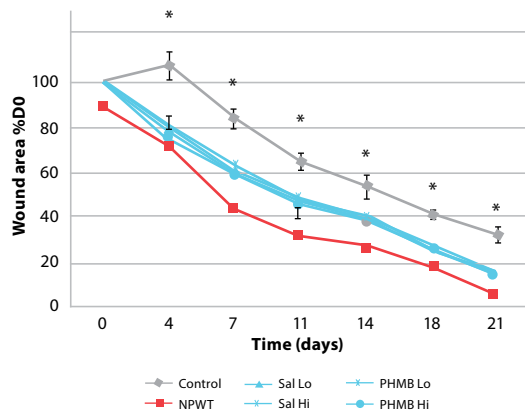
7. Turn device ON on the Cardinal Health™ SVED® or PRO NPWT device and allow dressing to reach set pressure.
8. Open the clamp and allow irrigation solution to flow until the irrigation solution begins to move through the Cardinal Health™ SpeedConnect™ tubing and into the canister.
9. Set the drip rate per physician order.

Proven Efficacy

In a peer-reviewed animal study using an acute wound model, Cardinal Health™ NPWT PRO device **significantly enhanced wound healing and reduced wound bioburden** compared to control therapy. NPWT with *Simultaneous Irrigation™ Technology* **further** reduced bioburden over control and NPWT treated wounds.⁵

Fig.1 Wound Closure: average change in wound area over time

Cardinal Health™ NPWT PRO significantly reduces wound volume and increases speed of healing over control dressing.



*Indicates statistical significance at p<0.05.

Study design: A clinically recognized porcine model with dorsal full thickness excisional wounds was used for this study. The six wounds per animal were inoculated with *Pseudomonas aeruginosa* for 3 days prior to therapy initiation. Wounds were treated for 21 days with either NPWT, NPWT with *Simultaneous Irrigation™ Technology* using saline (Sal) or PHMB at low or high (Hi) flow rates, or control (Cont) wounds. Data demonstrates that NPWT with either irrigation condition improved wound healing rates over control treated wounds, but did not differ from NPWT alone (Figure 1).

When change in bioburden was compared to therapy day 0, NPWT improved bioburden in wounds over control therapy (Figure 2). The addition of saline or PHMB irrigation to NPWT further reduced bioburden over control and NPWT treated wounds. Both high and low flow rates resulted in similar decreases in wound bioburden.

This is the first published controlled study demonstrating that NPWT with *Simultaneous Irrigation™ Technology* with either normal saline or PHMB has a positive effect on bioburden reduction in a porcine model, which may translate clinically to improved wound healing outcomes.

Fig.2 Pseudomonas: average change from Day 0

Cardinal Health™ NPWT PRO significantly reduces bioburden over control dressing.

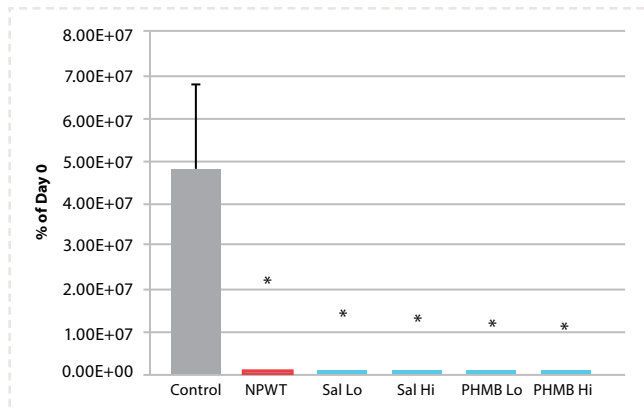
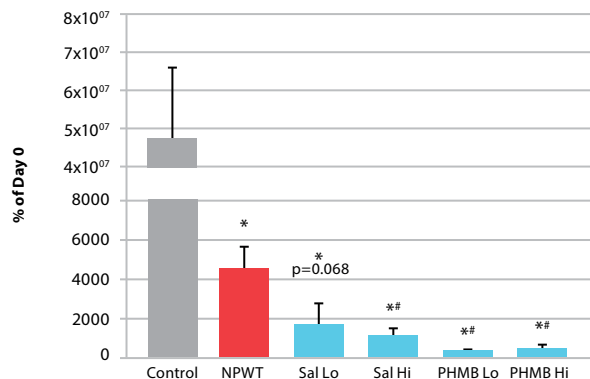


Fig.2 Pseudomonas detail



Bacteria levels measured by qPCR versus control.
*Indicates statistical significance at p<0.05 versus NPWT alone.

How to order

Product Description	Catalog No.	Quantity
Cardinal Health™ NPWT Irrigation Tubing with SpeedConnect™	47-6000	5 ea/cs
Cardinal Health™ NPWT Irrigation Delivery Set	47-6500	5 ea/cs
Cardinal Health™ NPWT SVED® Device	6701132	1 ea/cs
Cardinal Health™ NPWT PRO Device	6708888	1 ea/cs

For more information or to order, contact your Cardinal Health sales representative today, call **866.484.6798** or visit cardinalhealth.com/npwt



1 Davis K, Moquin K, Lavery L. Fluid Dynamics of Simultaneous Irrigation with NPWT. Poster session presented at: Symposium on Advanced Wound Care; 2014 Oct 16-18; Las Vegas, NV.

2 Determined by Physician's Written Order.

3 Based on publicly available information.

4 Cardinal Health™ SVED Clinician User Manual, 1255SVEDMANCLCH.

5 Davis, K., et al., Simultaneous irrigation and negative pressure wound therapy enhances wound healing and reduces wound bioburden in a porcine model. Wound Repair Regen, 2013. 21(6): p. 869-75.

Patents: US7837673; US7608066; US7532953; US8142405

© 2017 Cardinal Health. All Rights Reserved. CARDINAL HEALTH, the Cardinal Health LOGO, ESSENTIAL TO CARE, SVED SPEEDCONNECT and SIMULTANEOUS IRRIGATION TECHNOLOGY are trademarks or registered trademarks of Cardinal Health. All other marks are the property of their respective owners. Lit. No. 25P17-693821 (07/2017)

For more information or to order, contact your Cardinal Health sales representative today, call **866.484.6798** or visit cardinalhealth.com/npwt